

Be part of the popular Life exhibition - coming to your area soon!



The Life exhibition is an exciting, multi-media experience designed for primary school children which complements the current non-statutory guidelines for Religious Education in the UK.

Using interactive tablets, graphic panels, quizzes, films, songs and a discussion café, Life helps children learn – in just over an hour – about the story of Jesus and his relevance today.

The exhibition, which is free thanks to the sponsorship of your local churches and Christian charity Counties, is aimed at Upper Key Stage 2 and incorporates aspects of the Locally Agreed Syllabus

Since its launch in 2006, more than 150,000 children and adults have visited the exhibition with great feed-back from visitors including headteachers, teachers and pupils

- **Save time on planning RE lessons for Years 5 and 6** – the Life exhibition complements a key area of the syllabus.
- **No setting up involved** – the exhibition will be placed in a local venue off-site by church volunteers.
- **Enhance the IT skills of pupils** – children will get to use tablets and computer voting during their visit.
- **Complement existing teaching within your school** – the structured programme enables pupils to use listening, reading and speaking skills.
- **Full support** – a comprehensive Life Schools Pack will be given to you with lesson plans for before and after the visit, plus a local organiser can offer ongoing support and follow-up.
- **Reliable** – the exhibition has been developed by Christian charity Counties along with education specialists to encourage children to question, challenge and form their own opinions on the story of Jesus.

“Life is a fantastic experience for the children, thoroughly worthwhile.”
Ann Griffin, headteacher of Whitchurch Primary School, Cardiff.



The Life exhibition – what does it look like?

The Life exhibition is split into 4 areas, each covering different themes about what Christians believe about Jesus.

“Brilliant workshop, children were absorbed in the activities. Really enjoyable and very informative. Feedback forms were fantastic. Thanks to all for a wonderful, well organised activity.”
Yr 5 Teacher, St John's Primary School, Southampton.

Introduction

This area welcomes pupils and introduces the themes of the exhibition through a two minute DVD.



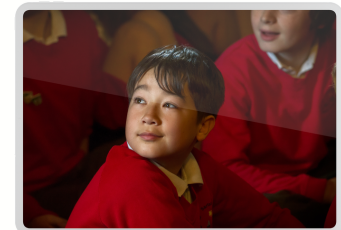
Pods

Pupils are given tablets and headphones and encouraged to explore various coloured pods with graphic panels, quizzes and interaction with group leaders. Each pod reflects different aspects of the life of Jesus – his historic and prophetic roots, his teachings and his miracles.



Life giver

Children watch a dramatic film covering the death, burial and resurrection of Jesus.



Cafe

An area to relax with a drink and for pupils to take part in an interactive quiz, whilst reflecting on their experience of visiting the Life exhibition.



Who's behind the Life exhibition?

The Life exhibition is a project run by Christian charity Counties. Established in 1899, Counties aims to provide churches and schools with resources to make Christianity understandable and accessible in the 21st century. Resources include the popular GSUS Live mobile unit for secondary school children, puppet shows, holiday clubs and camps plus local speakers for assemblies.

For more information visit countiesuk.org



“ Teachers of RE all over Britain need dynamic, authentic and exciting ways of enabling pupils to think hard about Christianity. The Life exhibition continues to deliver this for tens of thousands of pupils, connecting Christian communities with school communities. ”

Lat Blaylock. RE Adviser, RE Today Services Editor, RE Today magazine

What next?

If you would like your school to visit the Life exhibition when it comes to your area please contact your local organiser who provided this pack.



Counties, 30 Haynes Road, Westbury, Wiltshire BA13 3HD
Counties is a Registered Charity No. 264278 and a Company limited by guarantee registered in England and Wales No. 1041761

lifeexpo.co.uk

Initial contact from
local organiser
to school
(6 months prior)



Schools book to
visit Life
(3-6 months prior)



The Life exhibition



On-going contact
with optional
follow-up sessions
at school



Bring your **RE**
lessons alive with an
exciting free resource
for your school

An introduction to the Life exhibition –
for schools



Or for more information
on the Life exhibition call
Kevin Baldwin, Life
exhibition co-ordinator,
on 07968 705623
or email
lifeexpo@countiesuk.org

The Life exhibition
The story of Jesus – kids style
lifeexpo.co.uk

